



Operating Conditions

1. Ambient temperature: +0°C~+40°C.
2. Liquid temperature: +0°C~+40°C.
3. 24Hr continuously running is allowed.

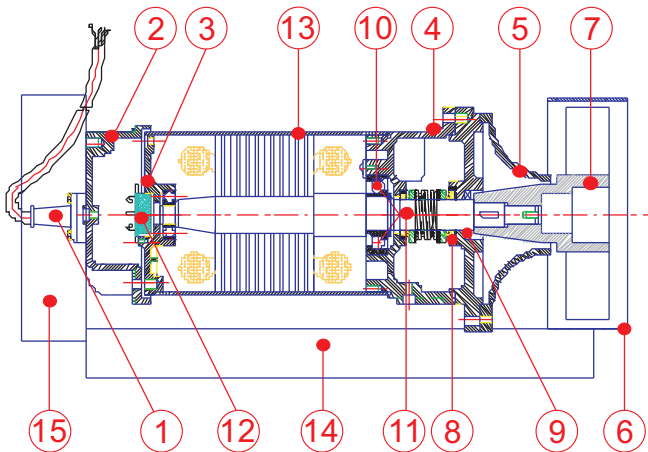
Applications

1. Wastewater treatment of all industries.
2. River, ponds, lakes dredging.
3. Artificial flow of amusement facilities.
4. Mix and agitate impurities in the water.

Motor

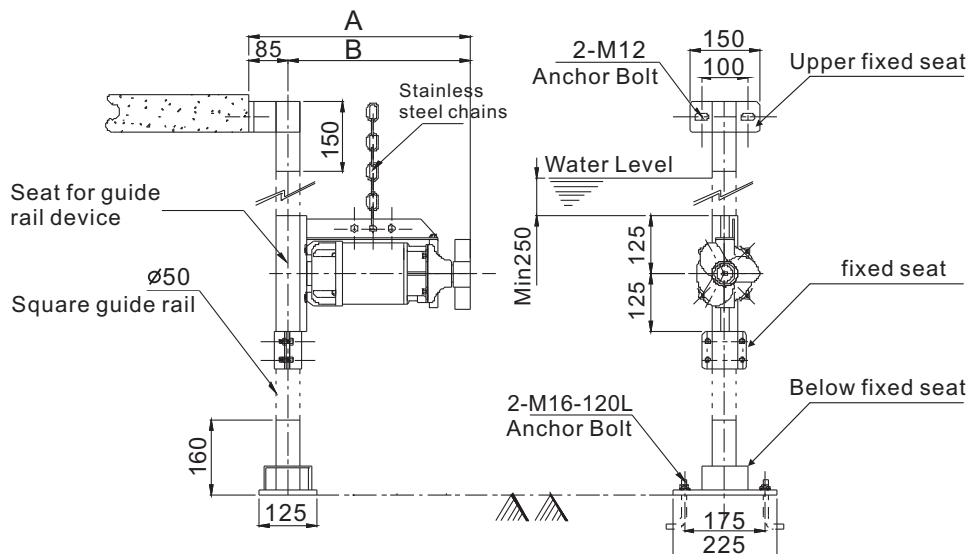
1. Voltage: Three phase 220,380,415V
2. Frequency: 50 or 60HZ
3. Enclosed class: IP68
4. Insulation: F
5. Pole: 4P
6. Built in motor overload protector

Construction



NO.	NAME	MATERIAL
1	Cable	STOW
2	Motor upper cover	FC200
3	Bearing housing	FC200
4	Bracket	FC200
5	Inlet housing	FC200
6	Jet Ring	SUS304
7	Mixer impeller	FCD450
8	Mechanical seal	SIC/SIC
9	Oil seal	VITON
10	Bearing	(NTN)
11	Shaft	SUS304
12	Overload protector	(T.I.)
13	Motor housing	SUS304
14	Support base	SUS304
15	Seat for guide rail device	SUS304

Specification & Dimensions



Model	Output		Pole	Capacity	Flow Speed	Dimensions(mm)	
	KW	HP				A	B
EFM-05T	0.40	1/2	4	1.8	1.78	480	395
EFM-10T	0.75	1	4	3.2	2.02	510	425
EFM-20T	1.50	2	4	4.5	2.50	632	567
EFM-30T	2.20	3	4	6.8	3.50	652	587